



Official I-MOD Roll Cage Kit



RaceStar Concepts welcomes you to the I-MOD Association. Below is the information regarding the assembly and installation of the official I-MOD roll cage kit. Please refer to the current I-MOD rule book for any changes to these instructions.

1. Cage kit **MUST** be purchased from I-MOD association. **ALL** cages will be assigned a number (after final inspection). This number will be welded on to right front frame horn by chassis builder. Cage and chassis must pass I-MOD inspection to obtain cage/chassis number. Car **WILL NOT** be allowed to compete until cage/chassis number is assigned.
2. **ANY** chassis builder is eligible to build chassis so long as rule book is followed.
3. After chassis building is complete and before interior and body is installed, chassis builder must contact I-MOD Director for final cage/chassis inspection. Upon approval, cage/chassis will then be assigned number. There is a \$25 inspection fee that will be paid to inspector upon arrival to chassis builders shop to help offset time and fuel expenses.
4. **NO** moving, adjusting, or relocating **FRONT** lower control arm mounts. Stock location only. Must fit I-MOD testing fixture.
5. **NO** moving, adjusting or relocating rear trailing arm mounts or cross member. Mounting holes must measure to stock specs.



- Main hoop must be mounted exactly $36\frac{1}{2}$ " behind center body mount hole in OEM frame. Rear Main hoop must be mounted at a 90-degree angle to frame. NO lay back. Rear main hoop mounts onto frame extension (included in kit) and will align with oblong hole in OEM frame. (see fig. 1) The 39" bar (included in kit) must be used to space between rear main hoop and front down tube extensions. (see fig.2)

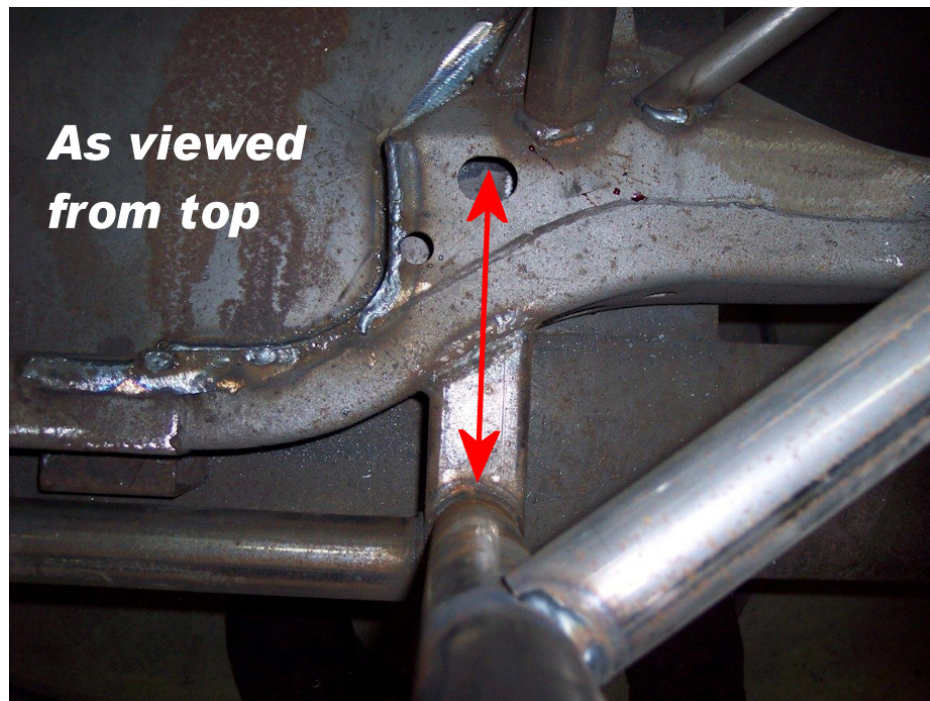


Fig 1

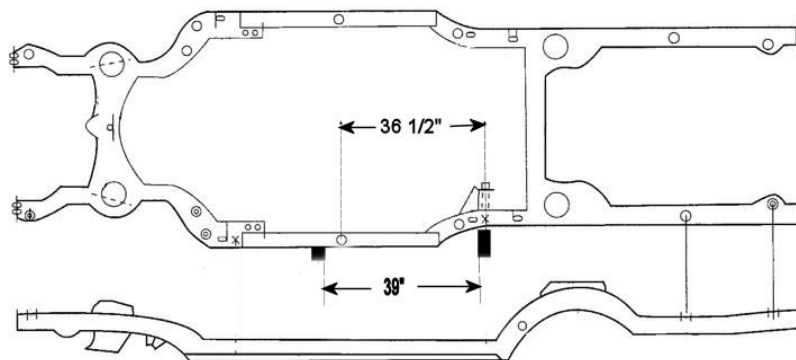


Fig 2



7. Rear springs must mount in stock locations. Rear spring buckets may be used. Aftermarket spring buckets must not be higher than 3 1/2" above frame bulge. (See figure 3)

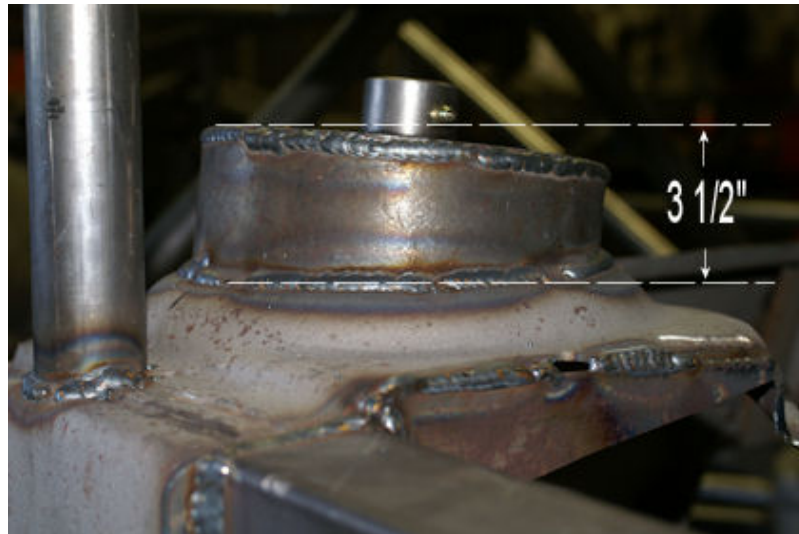


Fig 3

8. Rear section of original frame may be cut off no less than 5" behind center of spring bucket and replaced with tubing. No modifications can be made to original frame height, width, or thickness in this area. (See figure 4)

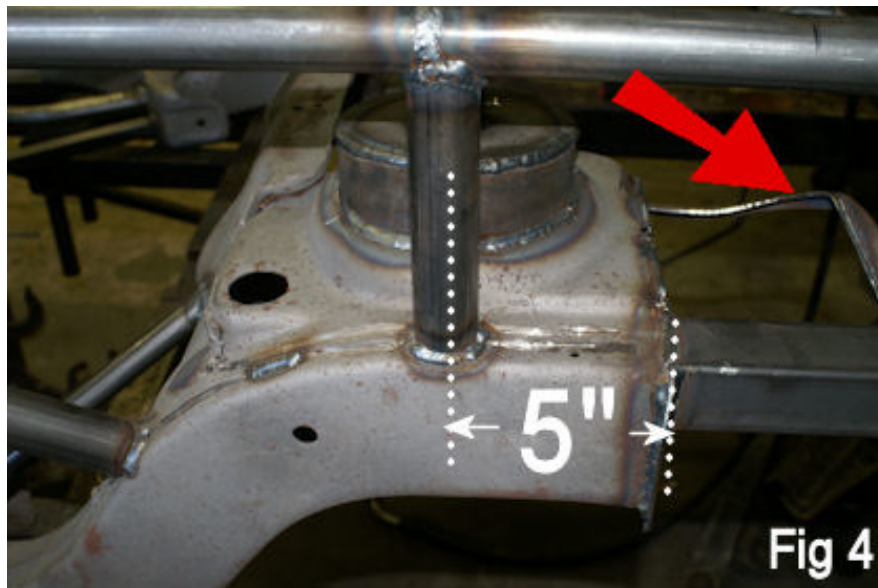


Fig 4

9. Original rear upper shock mount frame section must be in place and attached in stock location. Center may be cut out for shock clearance. (see red arrow in figure 4)



10. Rest of cage then can be assembled as per figures 5 & 6.



Fig 5

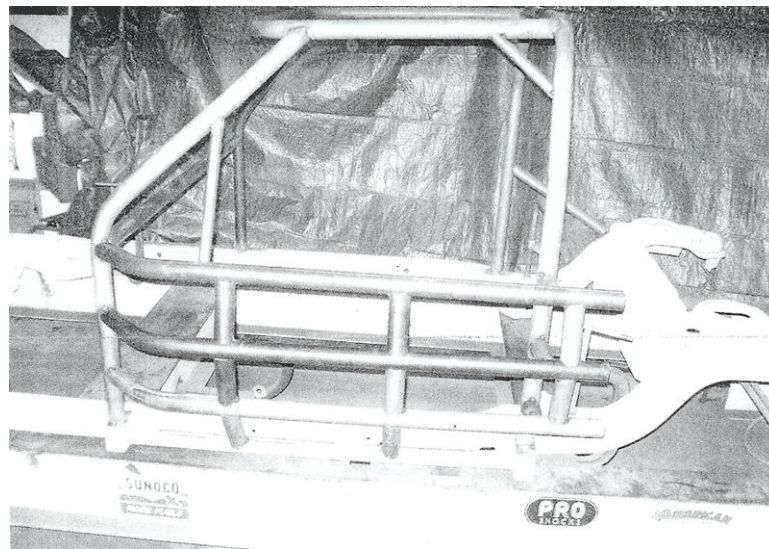


Fig 6

11. Door plate must be attached to outside of LH door bars. Minimum of 1/8" steel plate measuring 14" tall and 30" wide.

12. Cage and chassis measurements are subject to tech inspection at ANY time.

13. Any questions, please contact:

Rich Rish, I-MOD Director
 9054 Holmes Terrace East
 DeMotte, IN 46310
 219-405-6845